



READING YOUR WATER METER

Why read your Water Meter

Did you know that you don't have to wait for a bill to arrive to tell you how much water you are using – you can read your water meter yourself. Regularly reading your meter will help you keep your water bills down by being aware of your use and could also save you lots of money if you identify a hidden leak early.

Where is your Water Meter

For most single dwelling properties, your water meter should be located somewhere along the front boundary of your property. If you can't find your water meter, you can contact Council's Water Services Section on 6746 1755 for assistance in locating your meter.

How to read your Water Meter

There are different types of water meters which have to be read differently, but the most common water meters in Liverpool Plains Shire are like reading your car odometer. Your water bill is charged by the amount of kilolitres (kL) you have used. 1 Kilolitre = 1,000 litres of water. Kilolitres are usually black figures on a white background.

A short video showing how to read your meter can be found [Here](#)

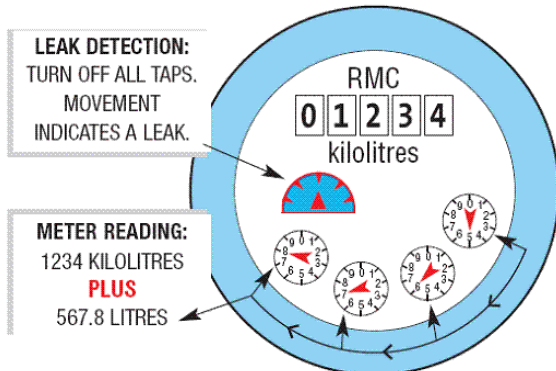


Meter ID Number
←

The white numbers, on the left, show the reading in kilolitres. These are the numbers used for billing purposes.



The red numbers, on the right, show litres used. This dial will continue to move if you have a leak.



60 Station Street
PO Box 152
Quirindi NSW 2343
TEL 02 6746 1755
FAX 02 6746 3255
EMAIL lpssc@lpssc.nsw.gov.au
WEBSITE www.lpssc.nsw.gov.au
ABN 97 810 717 370